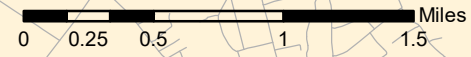


# TOWN OF SOUTHAMPTON SHELLFISH CLOSURES



\*\* The locations of the Shellfish Spawning Sanctuary Areas shown by this map were **NOT** surveyed by GPS. The locations of the Sanctuary Areas shown by this map represent the Locations of those features in **GENERAL**. For acutal Locations Contact The Town of Southampton Board of Trustees

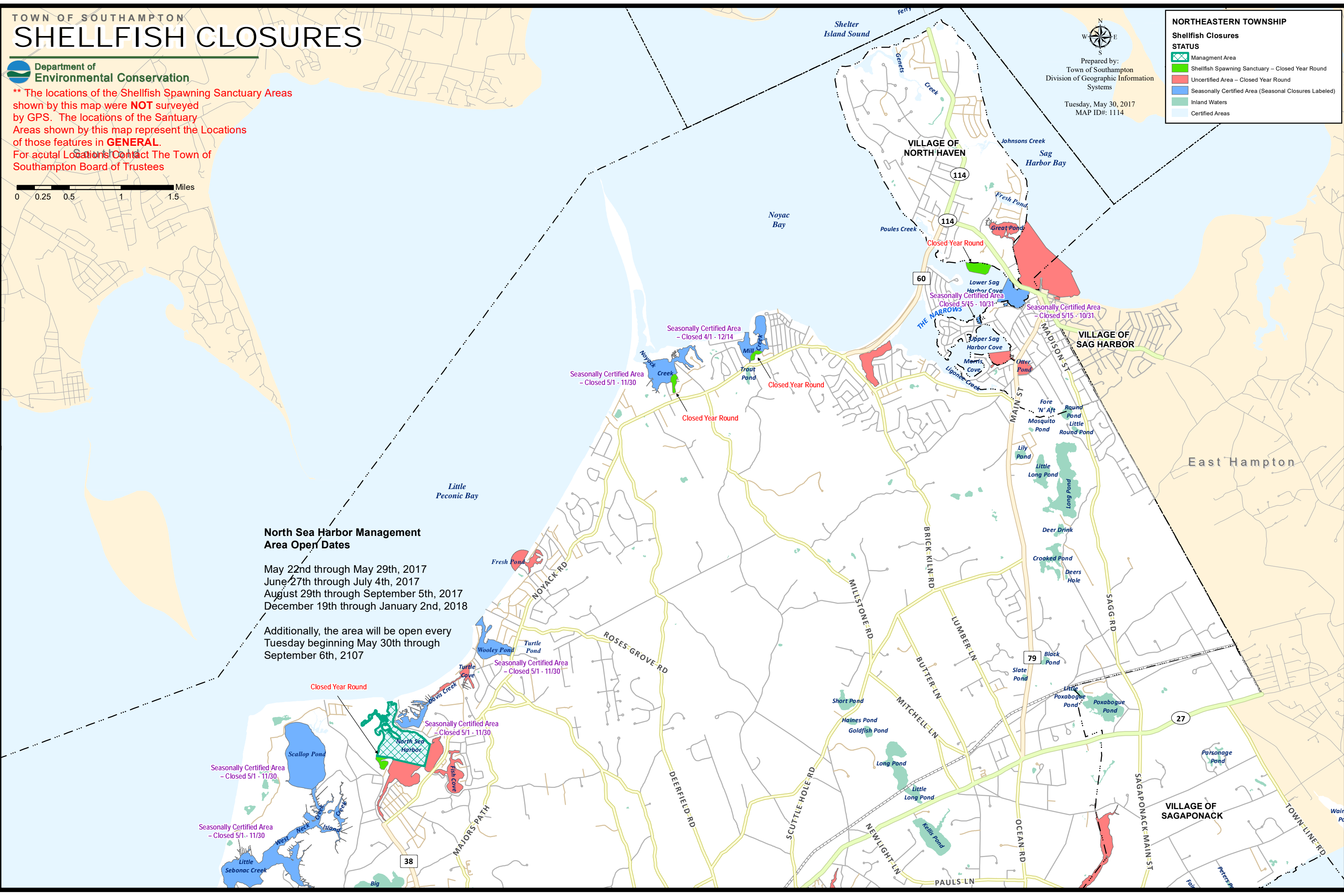


Prepared by:  
Town of Southampton  
Division of Geographic Information Systems  
Tuesday, May 30, 2017  
MAP ID#: 1114

**NORTHEASTERN TOWNSHIP**

**Shellfish Closures STATUS**

- Management Area
- Shellfish Spawning Sanctuary – Closed Year Round
- Uncertified Area – Closed Year Round
- Seasonally Certified Area (Seasonal Closures Labeled)
- Inland Waters
- Certified Areas



**North Sea Harbor Management Area Open Dates**

May 22nd through May 29th, 2017  
 June 27th through July 4th, 2017  
 August 29th through September 5th, 2017  
 December 19th through January 2nd, 2018

Additionally, the area will be open every Tuesday beginning May 30th through September 6th, 2107