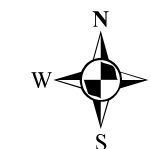




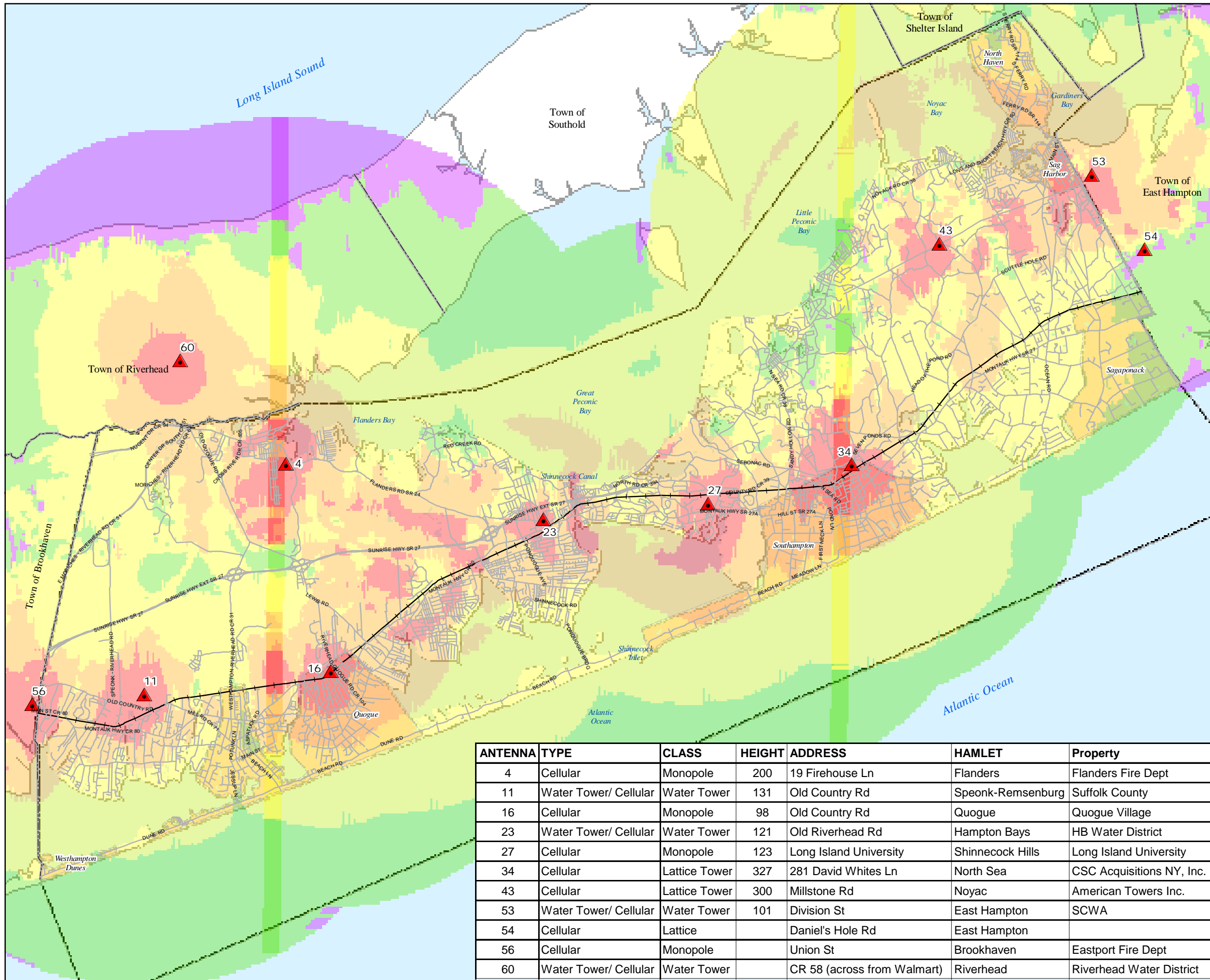
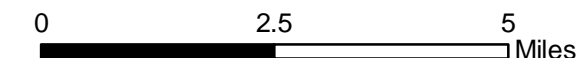
# WIRELESS MASTER PLAN

## Approximate Available Nextel Coverage

Prepared by:  
**Town of Southampton**  
Dept. of Geographic Information Systems  
116 Hampton Rd  
Southampton, NY 11968



1:130,000



- Nextel Cellular Sites
- Good Urban In-Building Coverage (>-65 DBM)
- Fair Urban/ Good Suburban In-Bldg Coverage (-65.0 to -75.0 DBM)
- Good Hwy In-Vehicle, Fair to Spotty In Bldg Coverage (-75.0 to -85.0 DBM)
- Fair to Spotty Hwy In-Vehicle, Good Outdoor Coverage (-85.0 to -95.0 DBM)
- Fair Outdoor to No Coverage (<-95.0 DBM)

**\* Based on data provided by COMP COMM**

ANTENNA	TYPE	CLASS	HEIGHT	ADDRESS	HAMLET	Property
4	Cellular	Monopole	200	19 Firehouse Ln	Flanders	Flanders Fire Dept
11	Water Tower/ Cellular	Water Tower	131	Old Country Rd	Speonk-Remsenburg	Suffolk County
16	Cellular	Monopole	98	Old Country Rd	Quogue	Quogue Village
23	Water Tower/ Cellular	Water Tower	121	Old Riverhead Rd	Hampton Bays	HB Water District
27	Cellular	Monopole	123	Long Island University	Shinnecock Hills	Long Island University
34	Cellular	Lattice Tower	327	281 David Whites Ln	North Sea	CSC Acquisitions NY, Inc.
43	Cellular	Lattice Tower	300	Millstone Rd	Noyac	American Towers Inc.
53	Water Tower/ Cellular	Water Tower	101	Division St	East Hampton	SCWA
54	Cellular	Lattice		Daniel's Hole Rd	East Hampton	
56	Cellular	Monopole		Union St	Brookhaven	Eastport Fire Dept
60	Water Tower/ Cellular	Water Tower		CR 58 (across from Walmart)	Riverhead	Riverhead Water District

MAP # 9

Suffolk County Real Property Tax Service  
COPYRIGHT 2006, COUNTY OF SUFFOLK, N.Y.  
Real Property Taxmap parcel line work used with permission of Suffolk County Real Property Tax Service Agency (R.P.T.S.A.)  
This Cartographic rendering is a DRAFT MAP exempted from the provisions of the Freedom of Information Law (F.O.I.L.)  
[Public Officers Law Article 6 Section 84-90] by section 87.2(g) in that:

- 1) The data displayed is an interagency or intra agency data produced for the purpose of identifying and correcting data.
- 2) It is not a final agency determination.
- 3) It is not a statistical or factual compilation of data.
- 4) In some cases correct data has been left out and questionable or inaccurate data has been exaggerated to help identify errors. In short this is a DRAFT MAP produced in cooperation with the Data sources listed in an effort to aid in the correction of data and is not held out as being complete or accurate in any way.