

Appendix D-5
Noise Study Documents

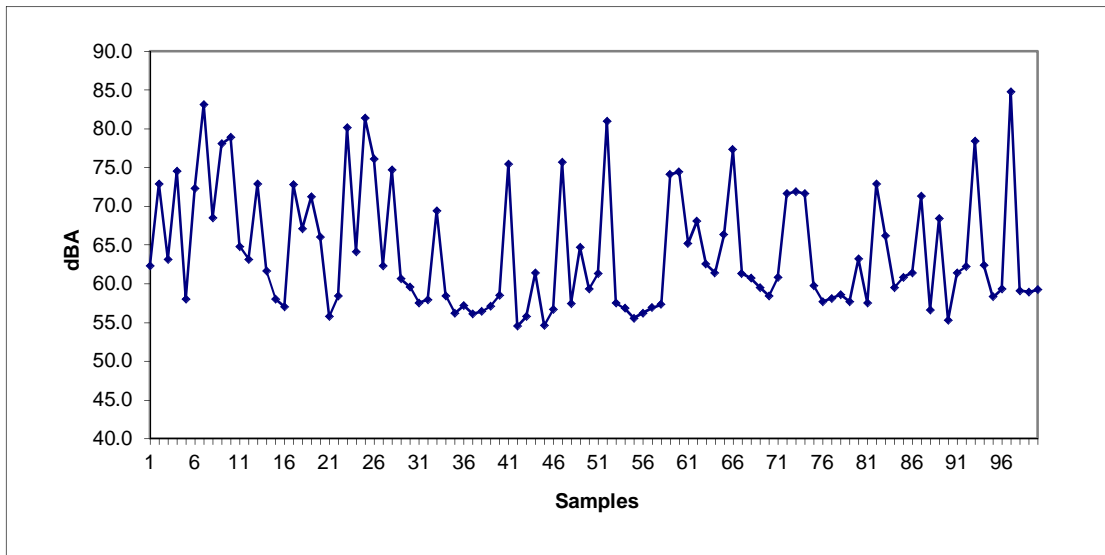
NOISE SURVEY DATA SHEET

STATION 1

Date:	12/5/14	Field Notes:	Lewis Road has an intermittent flow of traffic (cars/trucks).
Time:	10:20 AM		Measurements with cars and trucks passing in range of 60 - 84.8
Interval:	10 seconds		Without cars or trucks passing (values between 54.5 and 62.3)
Location:	Lewis Road and Damascus Road		
Weather:	42 degrees and partly cloudy		
Description:	East side of Lewis Road near Damascus Road (proposed construction entrance site)		

1	62.3		18	67.1		35	56.2	c	51	61.3	c	68	60.7	hc	85	60.8	c
2	72.9	c	19	71.2	tk	36	57.2	c	52	81.0	tk	69	59.5	hc	86	61.4	c
3	63.1		20	66.0		37	56.1	c	53	57.5		70	58.4	hc	87	71.3	c
4	74.5	c	21	55.8		38	56.4		54	56.8		71	60.8	hc	88	56.6	
5	58.0		22	58.4		39	57.1		55	55.5		72	71.6	c	89	68.4	c
6	72.3	c	23	80.1	tk	40	58.5		56	56.2		73	71.9	c	90	55.3	hc
7	83.1	tk	24	64.1		41	75.4	c	57	56.9		74	71.6	c	91	61.4	hc
8	68.5		25	81.4	tk	42	54.5	c	58	57.3		75	59.7		92	62.2	c
9	78.1	c	26	76.1	c	43	55.8		59	74.1	c	76	57.7		93	78.4	c
10	78.9	c	27	62.3		44	61.4		60	74.4	c	77	58.1	hc	94	62.4	a
11	64.8		28	74.7	c	45	54.6		61	65.2		78	58.6	hc	95	58.3	hc
12	63.1		29	60.6		46	56.7	c	62	68.1	c	79	57.7	hc	96	59.3	hc
13	72.9	c	30	59.6		47	75.7	c	63	62.5		80	63.2	hc	97	84.8	tk
14	61.6		31	57.5		48	57.4		64	61.4		81	57.5	hc	98	59.1	c
15	58.0	b	32	57.9		49	64.7	c	65	66.3	c	82	72.9	c	99	58.9	c
16	57.0	b	33	69.4	c	50	59.3		66	77.3	c	83	66.2	c	100	59.2	
17	72.8	c	34	58.4	c				67	61.3	hc	84	59.5	c	Leq:	72.1	

a: aircraft c: car(s) tk: truck d: dog nc: no cars mc: motorcycle
 b: birds hc: hedge clippers



Maximum Value: 84.8
 Minimum Value: 54.5

NOISE SURVEY DATA SHEET

STATION 2

Date: 12/5/14
Time: 11:40 PM
Interval: 10 seconds

Location: Spinney Road and Pleasant Lane
Weather: 44 degrees, partly cloudy, lt. breeze of 4 to 6 mph
Description:

Taken at the intersection of Spinney Road and Pleasant Lane near proposed construction.

Field Notes:
 Sources of Noise noted:

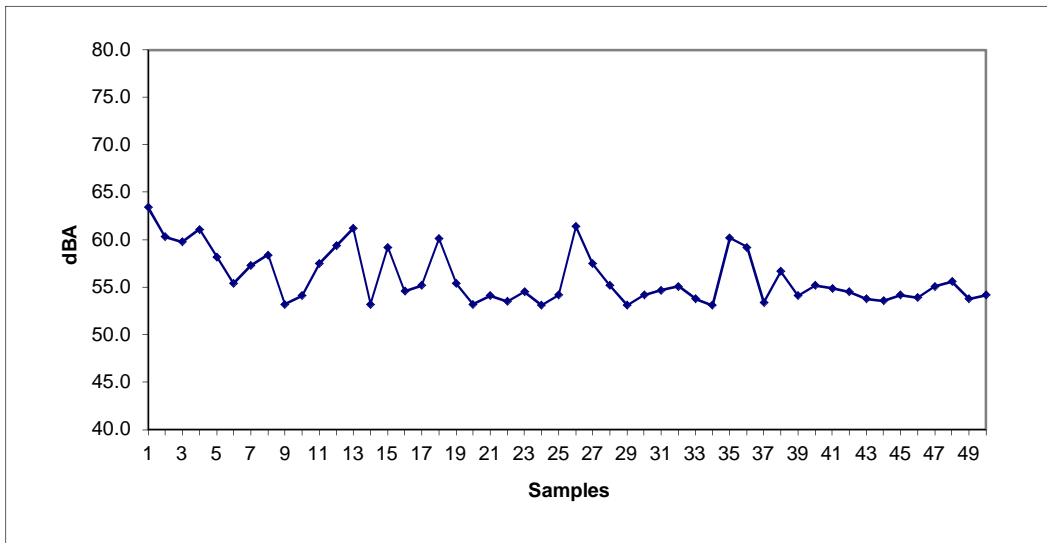
Survey was shortened to 50 measurements due to landscaping noise (leaf blower) on adjacent property.

Some traffic noise, birds, and leaves rustling .

Other notes:

1	63.4	c	18	60.1	c	35	60.2	c
2	60.3	lb	19	55.4		36	59.2	c
3	59.8	lb	20	53.2		37	53.4	
4	61.1	lb	21	54.1		38	56.7	wg
5	58.2	lb	22	53.5		39	54.1	
6	55.4	lb	23	54.5		40	55.2	
7	57.3	lb	24	53.1		41	54.9	
8	58.4	lb	25	54.2		42	54.5	
9	53.2		26	61.4	c	43	53.8	
10	54.1		27	57.5	c	44	53.6	
11	57.5	wg	28	55.2		45	54.2	
12	59.4	c	29	53.1		46	53.9	
13	61.2	c	30	54.2		47	55.1	
14	53.2		31	54.7		48	55.6	
15	59.2	wg	32	55.1		49	53.8	
16	54.6		33	53.8		50	54.2	
17	55.2		34	53.1		Leq: 57.0		

a: aircraft c: car(s) tk: truck d: dog nc: no cars mc: motorcycle
 lb: leaf blower wg: wind gust



Maximum Value: 63.4
 Minimum Value: 53.1

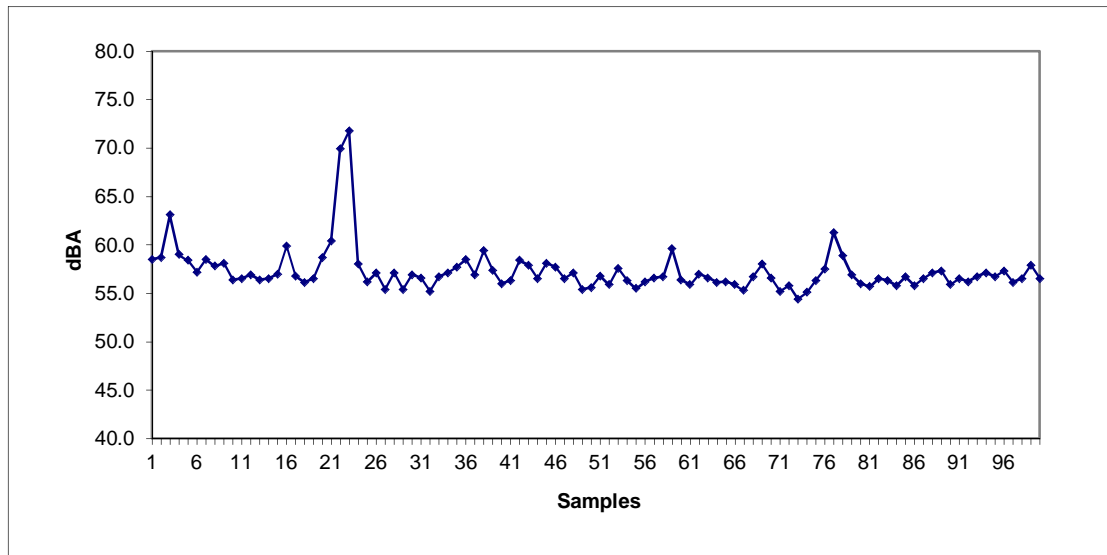
NOISE SURVEY DATA SHEET

STATION 3

Date:	12/5/14	Field Notes:	
Time:	10:43 AM		Spinney Road has very little vehicular traffic.
Interval:	10 seconds		Some noise was associated with leaves rustling from wind and
Location:	95 Spinney Road		landscaping in distance
Weather:	42 degrees and partly cloudy with 3 to 5 mph winds		
Description:	Between 95 and 103 Spinney Road along its midpoint near proposed land clearing activities.		

1	58.5	b	18	56.1		35	57.7		51	56.8		68	56.7		85	56.7	
2	58.7	wg	19	56.5		36	58.5		52	55.9		69	58.0	wg	86	55.8	
3	63.1	wg	20	58.7	wg	37	56.9		53	57.6		70	56.6		87	56.5	
4	59.0	wg	21	60.4	tk	38	59.4	wg	54	56.3		71	55.2		88	57.1	
5	58.4		22	69.9	tk	39	57.4		55	55.5		72	55.8		89	57.3	
6	57.2		23	71.8	tk	40	56.0		56	56.2		73	54.4		90	55.9	
7	58.5	wg	24	58.0		41	56.3		57	56.6		74	55.1		91	56.5	
8	57.8		25	56.2		42	58.4		58	56.7		75	56.3		92	56.2	
9	58.1		26	57.1		43	57.9		59	59.6		76	57.5	tk	93	56.7	
10	56.4	lb	27	55.4		44	56.5		60	56.4		77	61.3	tk	94	57.1	
11	56.5	lb	28	57.1		45	58.1	wg	61	55.9		78	58.9	tk	95	56.7	
12	56.9	lb	29	55.4		46	57.7		62	57.0		79	56.9		96	57.3	
13	56.4	lb	30	56.9	wg	47	56.5		63	56.6		80	56.0		97	56.1	
14	56.5	lb	31	56.6		48	57.1		64	56.1		81	55.7		98	56.5	
15	57.0	lb	32	55.2		49	55.4		65	56.2		82	56.5		99	57.9	wg
16	59.9	lb	33	56.7		50	55.6		66	55.9		83	56.3		100	56.5	
17	56.8	lb	34	57.1					67	55.3		84	55.8		Leq:	58.9	

a: aircraft c: car(s) tk: truck d: dog nc: no cars mc: motorcycle
 b: birds wg: wing gust lb: leaf blower



Maximum Value: 71.8
 Minimum Value: 54.4

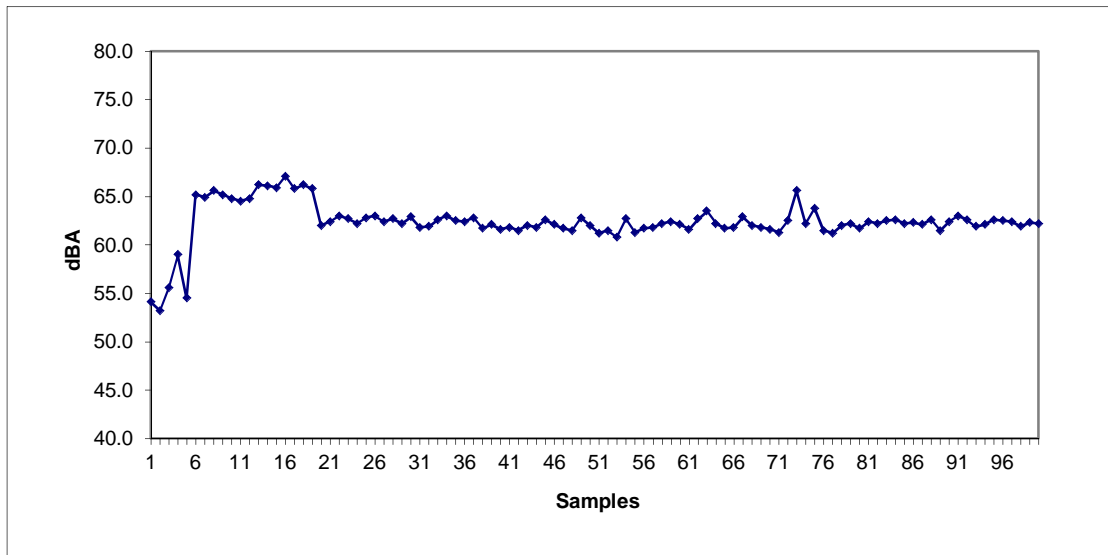
NOISE SURVEY DATA SHEET

STATION 4

Date:	12/5/14	Field Notes:	Spinney Road has very little vehicular traffic.
Time:	11:15 AM		
Interval:	10 seconds		
Location:	Northern portion of Spinney Road		Some noise associated with leaves rustling, a nearby idling car, & constant hum of nearby water pump station.
Weather:	43 degrees and partly cloudy with 3 to 5 mph winds		
Description:	At the northern end of Spinney Road near proposed land clearing activities.		

1	54.1		18	66.2	ps	35	62.5	ps	51	61.2	wg	68	62.0	ps	85	62.2	
2	53.2		19	65.8	ps	36	62.4	ps	52	61.5	wg	69	61.8	ps	86	62.3	
3	55.6	wg	20	62.0	ps	37	62.8	ps	53	60.8	wg	70	61.6	ps	87	62.1	
4	59.0		21	62.4	ps	38	61.7	ps	54	62.7		71	61.3	ps	88	62.6	
5	54.5		22	63.0	ps	39	62.1	ps	55	61.3		72	62.5	ps	89	61.5	
6	65.2	ic	23	62.7	ps	40	61.6	ps	56	61.7		73	65.6	wg	90	62.4	
7	64.9	ic	24	62.2	ps	41	61.8	ps	57	61.8		74	62.2	ps	91	63.0	
8	65.6	ic	25	62.8	ps	42	61.5	ps	58	62.2		75	63.8	ps	92	62.6	
9	65.2	ic	26	63.0	ps	43	62.0	ps	59	62.4		76	61.5	tk	93	61.9	
10	64.8	ic	27	62.4	ps	44	61.8	ps	60	62.1		77	61.2	tk	94	62.1	
11	64.5	ic	28	62.7	ps	45	62.6	ps	61	61.6		78	62.0	tk	95	62.6	
12	64.8	ic	29	62.2	ps	46	62.1	ps	62	62.7		79	62.2		96	62.5	
13	66.2	ic	30	62.9	ps	47	61.7	ps	63	63.5	wg	80	61.7		97	62.4	
14	66.1	ic	31	61.8	ps	48	61.5	ps	64	62.2		81	62.4		98	61.9	
15	65.9	ic	32	61.9	ps	49	62.8		65	61.7		82	62.2		99	62.3	wg
16	67.1	ps	33	62.6	ps	50	62.0		66	61.8		83	62.5		100	62.2	
17	65.8	ps	34	63.0	ps				67	62.9		84	62.6		Leq:	62.8	

a: aircraft c: car(s) tk: truck d: dog nc: no cars mc: motorcycle
 b: birds wg: wind gust ic: idling car ps: pump station



Maximum Value: 67.1
 Minimum Value: 53.2

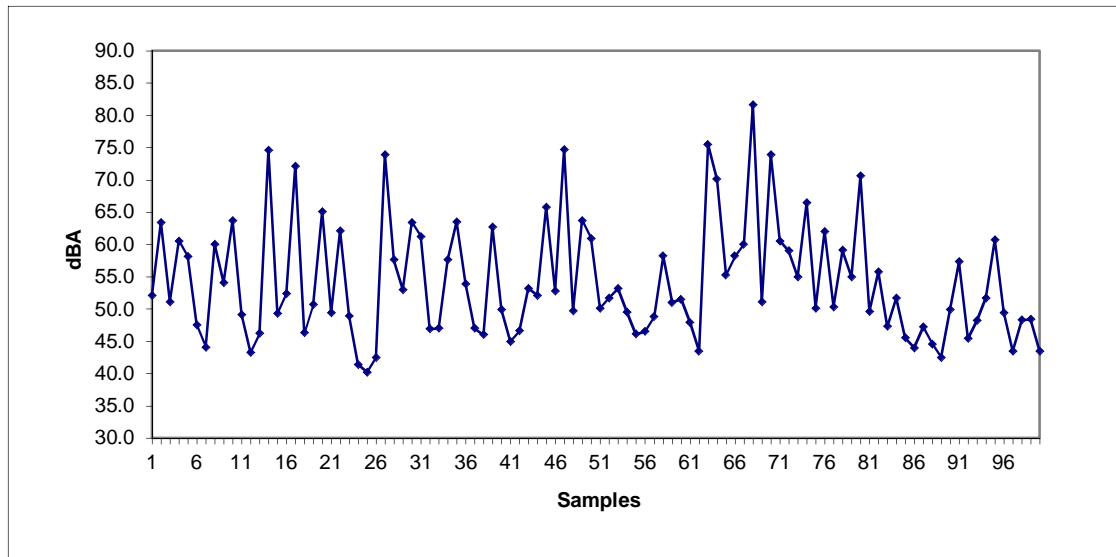
NOISE SURVEY DATA SHEET

STATION 1

Date:	4/15/15	Field Notes:	Lewis Road has an intermittent flow of traffic with both passenger cars and commercial
Time:	1:20 PM		Measurements during cars and trucks passing in range of 51.7 - 81.6
Interval:	10 seconds		noticeable change when no cars or trucks passing (values as low as
Location:	Lewis Road and Damascus Road		40.2)
Weather:	69 degrees, sunny, ~3 mph winds		
Description:	East side of Lewis Road near Damascus Road (proposed construction entrance site)		

1	52.1		18	46.3		35	63.5	c	51	50.1		68	81.6	tk	85	45.5	
2	63.4	c	19	50.7	b	36	53.9		52	51.7	c	69	51.1		86	44.0	
3	51.1		20	65.1	tk	37	47.0	w:	53	53.2	c	70	73.9	tk/c	87	47.2	b
4	60.5	tk	21	49.4		38	46.0		54	49.5		71	60.5		88	44.6	
5	58.1	tk	22	62.1	tk	39	62.7		55	46.1		72	59.0		89	42.5	
6	47.5		23	48.9	c	40	49.9		56	46.5		73	55.0		90	49.9	
7	44.1		24	41.4	b	41	45.0		57	48.8	tk	74	66.5	c	91	57.3	c
8	60.0	c	25	40.2		42	46.6		58	58.2	tk/c	75	50.1		92	45.4	b
9	54.1		26	42.5		43	53.2	lr	59	51.0		76	62.0	c	93	48.2	
10	63.7	c	27	73.9	c	44	52.1		60	51.5		77	50.3		94	51.7	c
11	49.1		28	57.6	c	45	65.8	c	61	47.9		78	59.1	tk	95	60.7	c
12	43.3		29	53.0	c	46	52.8		62	43.5		79	55.0		96	49.4	lr
13	46.2		30	63.4	c	47	74.7	c	63	75.5	c	80	70.6	c	97	43.5	
14	74.6	c	31	61.2	c	48	49.7		64	70.1	c	81	49.6		98	48.3	
15	49.3		32	46.9		49	63.7		65	55.3		82	55.8	c	99	48.4	
16	52.4	c	33	47.0		50	60.9		66	58.2	tk	83	47.3		100	43.5	
17	72.1	c	34	57.6					67	60.0	tk	84	51.7	c	Leq:	65.7	

a: aircraft c: car(s) tk: truck d: dog mc: motorcycle
 b: birds lr: leaves rustling w: wind



Maximum Value: 81.6
 Minimum Value: 40.2

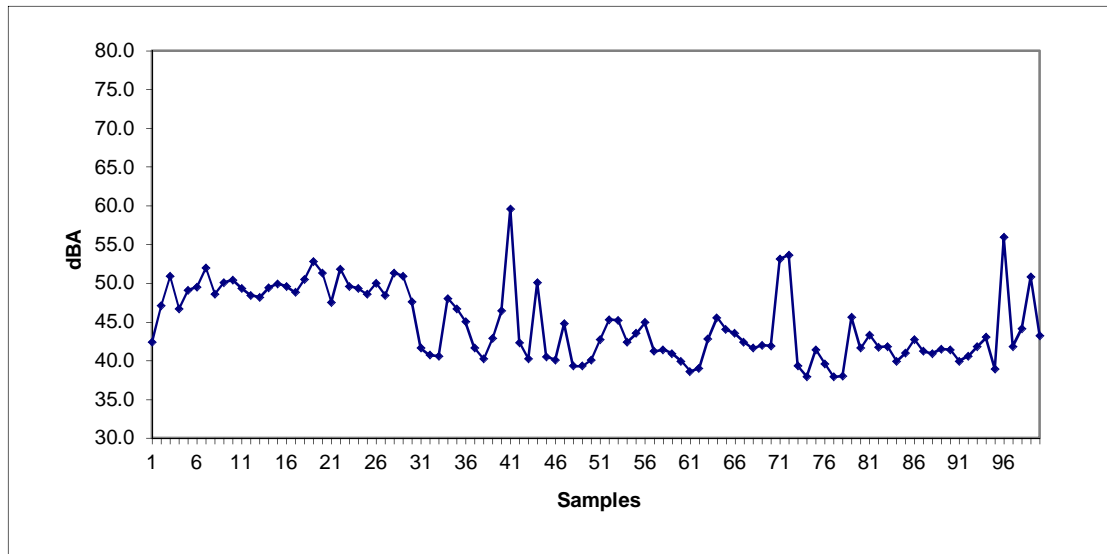
NOISE SURVEY DATA SHEET

STATION 2

Date:	4/15/15	Field Notes:	Lawn mowing in distance was occurring during the first 31 readings
Time:	1:42 PM		Other ambient noise included leaves rustling, wind,
Interval:	10 seconds		cars, and people in nearby residences
Location:	Spinney Road and Pleasant Lane		
Weather:	70 degrees, partly cloudy, ~3 mph winds		
Description:	Taken at the intersection of Spinney Road and Pleasant Lane near proposed construction.		

1	42.4		18	50.5	lr	35	46.7	c	51	42.7		68	41.6		85	41.0	
2	47.1	lr	19	52.8	lm	36	45.0	p	52	45.3		69	42.0		86	42.7	c
3	50.9		20	51.3	lm	37	41.6	p	53	45.2	lr	70	41.9		87	41.2	
4	46.7		21	47.5	lm	38	40.2		54	42.4	lr	71	53.1		88	40.9	
5	49.1		22	51.8	lm	39	42.9	c	55	43.5		72	53.6		89	41.5	
6	49.5	lr:	23	49.6		40	46.4	c	56	44.9	lr	73	39.3		90	41.4	
7	52.0	d	24	49.3		41	59.6	c	57	41.2		74	37.9		91	39.9	
8	48.6		25	48.6		42	42.3		58	41.4		75	41.4	p	92	40.6	
9	50.1	lr	26	50.0	lr	43	40.2		59	40.9		76	39.6		93	41.8	
10	50.4	lr	27	48.4		44	50.1	c	60	39.9		77	37.9		94	43.0	p
11	49.3		28	51.3	lr/lr	45	40.5		61	38.6		78	38.0		95	38.9	
12	48.4		29	50.9	lm	46	40.1		62	39.0		79	45.6	c	96	55.9	lr/w
13	48.2		30	47.6		47	44.8	lr	63	42.8		80	41.6		97	41.8	
14	49.4	lr	31	41.6		48	39.3		64	45.5	c	81	43.3	c	98	44.1	
15	49.9	lr	32	40.7		49	39.3		65	44.0	c	82	41.7		99	50.8	c
16	49.6		33	40.6		50	40.1		66	43.5		83	41.8		100	43.2	c
17	48.8	lr	34	48.0	w/lr				67	42.4		84	39.9		Leq:	47.7	

a: aircraft c: car(s) tk: truck d: dog p: people
 b: birds lr: leaves rustling w: wind lm: vn mower



Maximum Value: 59.6
 Minimum Value: 37.9

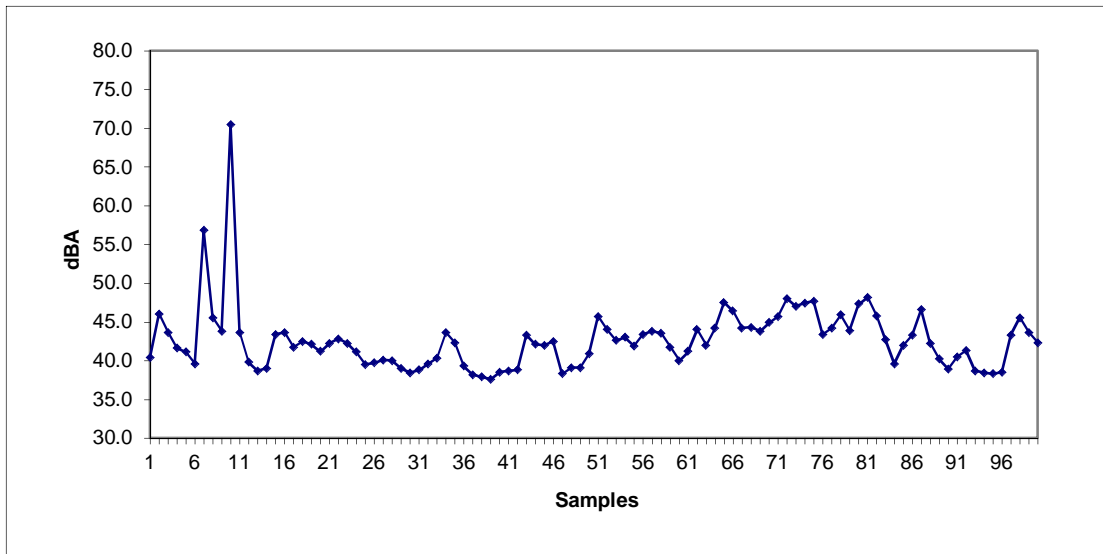
NOISE SURVEY DATA SHEET

STATION 3

Date: 4/15/15 **Field Notes:**
Time: 12:40 AM Spinney Road has very little vehicular traffic.
Interval: 10 seconds Some noise was associated with leaves rattling from wind gusts and work in distance
Location: 95 Spinney Road
Weather: 70 degrees and partly cloudy with 3 to 5 mph winds
Description: Between 95 and 103 Spinney Road along its midpoint near proposed land clearing activities.

1	40.4		18	42.5	b	35	42.3		51	45.7	lr	68	44.3		85	42.0	
2	46.0	a	19	42.1		36	39.3		52	44.0		69	43.8	wg	86	43.3	
3	43.6	a	20	41.2		37	38.2		53	42.6		70	44.9		87	46.6	lr
4	41.6		21	42.2	lr	38	37.9		54	43.0		71	45.7		88	42.2	
5	41.1		22	42.8	tk	39	37.6		55	41.9	lr	72	48.0	lr	89	40.2	
6	39.6		23	42.2	tk	40	38.5		56	43.4	lr	73	47.0	lr	90	38.9	
7	56.8	tk	24	41.1		41	38.7		57	43.8		74	47.4	lr	91	40.5	
8	45.5	tk	25	39.5		42	38.8		58	43.5		75	47.7	lr	92	41.3	
9	43.8	tk	26	39.7		43	43.3		59	41.7		76	43.4		93	38.7	
10	70.5	tk	27	40.1		44	42.1		60	40.0		77	44.2		94	38.4	
11	43.6		28	40.0		45	42.0		61	41.2		78	45.9	w	95	38.3	
12	39.8		29	39.0		46	42.5	lr	62	44.0	w	79	43.9		96	38.5	
13	38.7		30	38.4		47	38.3		63	42.0		80	47.3		97	43.3	w
14	39.0		31	38.8		48	39.1		64	44.2		81	48.2		98	45.5	w
15	43.4	w:	32	39.6		49	39.1		65	47.5		82	45.8		99	43.6	
16	43.6		33	40.3		50	40.9	lr	66	46.4	lr	83	42.7		100	42.3	
17	41.7		34	43.6	lr				67	44.2		84	39.6		Leq:	51.4	

a: aircraft c: car(s) tk: truck d: dog nc: no cars mc: motorcycle
 b: birds w: wind lr: leaves rattling



Maximum Value: 70.5
 Minimum Value: 37.6

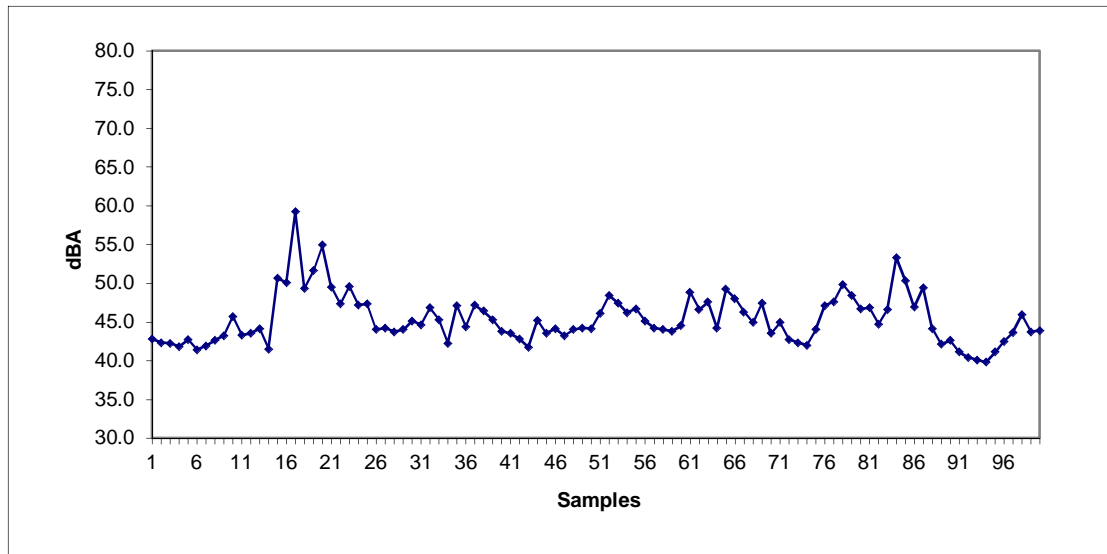
NOISE SURVEY DATA SHEET

STATION 4

Date:	4/15/15	Field Notes:	Spinney Road has very little vehicular traffic.
Time:	12:25 PM		Some noise was associated with leaves rattling on the pavement
Interval:	10 seconds		and work at a nearby water pumping station.
Location:	Northern portion of Spinney Road		
Weather:	69 degrees and mostly sunny with 3 to 5 mph winds		
Description:	At the northern end of Spinney Road near proposed land clearing activities.		

1	42.8		18	49.3	w/lr	35	47.1		51	46.1		68	44.9		85	50.3	lr
2	42.3	ps	19	51.6	w/lr	36	44.4		52	48.4	ps	69	47.4	lr	86	46.9	lr
3	42.2	ps	20	54.9	w/lr	37	47.2		53	47.4	ps	70	43.5	lr	87	49.4	lr
4	41.8	ps	21	49.5		38	46.4		54	46.2		71	44.9	lr	88	44.1	
5	42.7	ps	22	47.3		39	45.3		55	46.7		72	42.7		89	42.1	
6	41.4		23	49.6		40	43.8		56	45.1		73	42.3		90	42.6	
7	41.9	b	24	47.2		41	43.5		57	44.2		74	42.0		91	41.1	
8	42.6		25	47.3		42	42.8		58	44.0		75	44.0		92	40.4	
9	43.2	w/b	26	44.0		43	41.7		59	43.8		76	47.1	lr	93	40.1	
10	45.7	w/b	27	44.2		44	45.2		60	44.5		77	47.6	b	94	39.8	
11	43.3	ps	28	43.7		45	43.5		61	48.8	lr	78	49.8	lr/b	95	41.1	
12	43.5		29	44.0		46	44.1	lr	62	46.6		79	48.4	lr	96	42.5	
13	44.1		30	45.1		47	43.2	lr	63	47.6		80	46.7	lr	97	43.6	
14	41.5	w:	31	44.6	lr:	48	44.0	lr	64	44.2		81	46.8	lr	98	45.9	
15	50.6	lr/w	32	46.8	lr:	49	44.2		65	49.2		82	44.7		99	43.7	
16	50.1	lr	33	45.3	lr:	50	44.1		66	48.0	lr	83	46.6		100	43.9	
17	59.2	lr/w	34	42.2	ps				67	46.3		84	53.3	lr	Leq:	47.1	

a: aircraft c: car(s) tk: truck d: dog nc: no cars mc: motorcycle
 b: birds w: wind lr: leaves rustling ps: pumping station work



Maximum Value: 59.2
 Minimum Value: 39.8

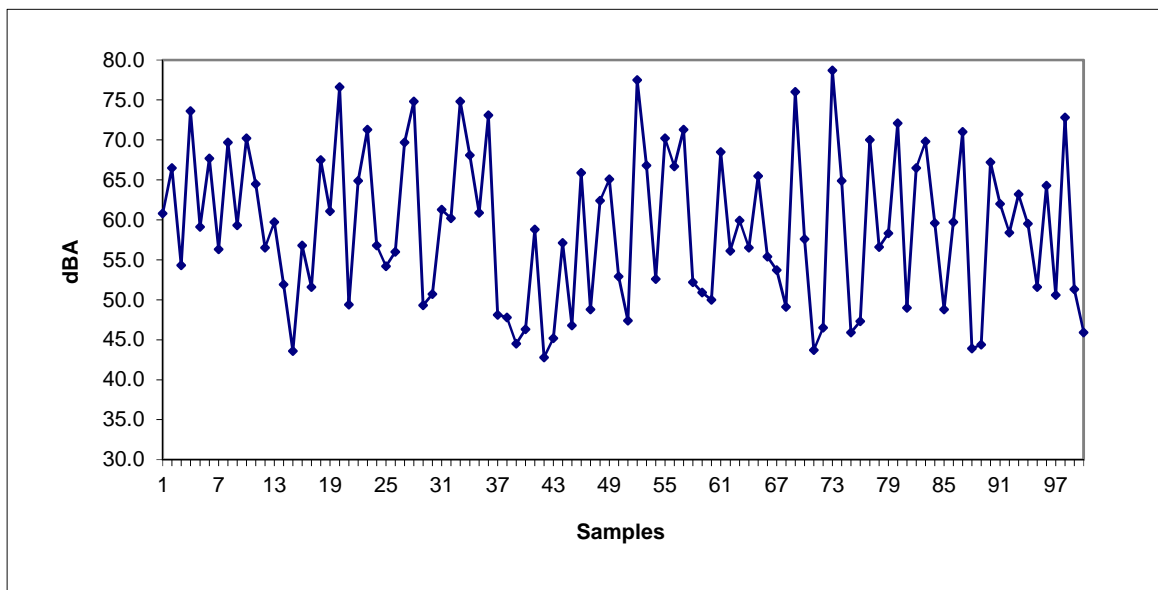
SOUND LEVEL DATA SHEET

STATION 1

Date: 6/24/16
Time: 8:20 AM
Interval: 10 sec
Location: Along Lewis Road just north of Damascus Road
Weather: 68 degrees F., with calm breeze from NE
Description: Morning Traffic along Lewis Road

1	60.8		18	67.5	c/tk	35	60.9	c/tk	51	47.4		68	49.1		85	48.8	
2	66.5	c/tk	19	61.1	c/tk	36	73.1	c/tk	52	77.5	c/tk	69	76.0	c/tk	86	59.7	c/tk
3	54.3		20	76.6	c/tk	37	48.1		53	66.8	c/tk	70	57.6	c/tk	87	71.0	c/tk
4	73.6	c/tk	21	49.4		38	47.8		54	52.6	c/tk	71	43.7		88	43.9	
5	59.1		22	64.9	c/tk	39	44.5		55	70.2	c/tk	72	46.5		89	44.4	
6	67.7	c/tk	23	71.3	c/tk	40	46.3		56	66.7	c/tk	73	78.7	c/tk	90	67.2	c/tk
7	56.3		24	56.8	c/tk	41	58.8	c/tk	57	71.3	c/tk	74	64.9	c/tk	91	62.0	c/tk
8	69.7	c/tk	25	54.2		42	42.8		58	52.2	c/tk	75	45.9		92	58.4	c/tk
9	59.3		26	56.0	c/tk	43	45.2		59	50.9		76	47.3		93	63.2	c/tk
10	70.2	c/tk	27	69.7	c/tk	44	57.1	c/tk	60	50.0		77	70.0	c/tk	94	59.5	c/tk
11	64.5	c/tk	28	74.8	c/tk	45	46.8		61	68.5	c/tk	78	56.6	c/tk	95	51.6	
12	56.5		29	49.3		46	65.9	c/tk	62	56.1	c/tk	79	58.3	c/tk	96	64.3	c/tk
13	59.7		30	50.7		47	48.8		63	59.9	c/tk	80	72.1	c/tk	97	50.6	c/tk
14	51.9		31	61.3	c/tk	48	62.4	c/tk	64	56.5	c/tk	81	49.0		98	72.8	c/tk
15	43.6		32	60.2	c/tk	49	65.1	c/tk	65	65.5	c/tk	82	66.5	c/tk	99	51.3	
16	56.8		33	74.8	c/tk	50	52.9	c/tk	66	55.4	c/tk	83	69.8	c/tk	100	45.9	
17	51.6		34	68.1	c/tk				67	53.7	c/tk	84	59.6	c/tk	Leq:	67.4	

a: aircraft c: car(s) tk: truck d: dog nc: no cars mc: Motorcycle
 b: birds w: wind lr: leaves rustling ps: pump station working



Maximum Value: 78.7
 Minimum Value: 42.8

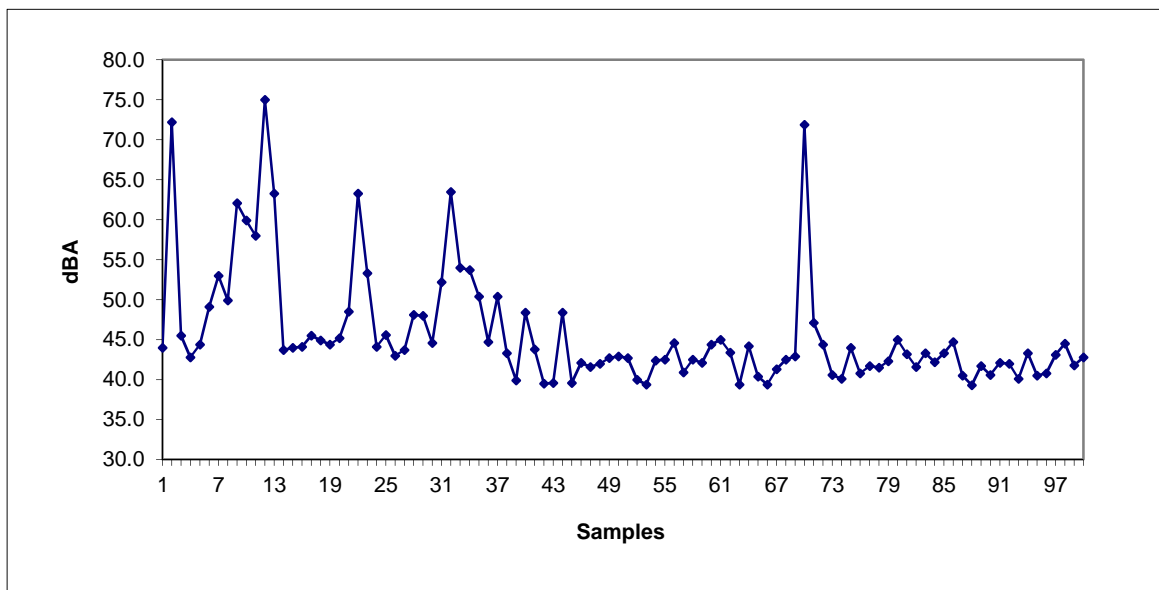
SOUND LEVEL DATA SHEET

STATION 2

Date: 6/24/16
Time: 7:55 AM
Interval: 10 sec
Location: South End of Spinney @ NW intersection of Spinney and Pleasant Lane
Weather: 67 degrees F, with calm breeze from NE
Description: Birds in nearby trees throughout monitoring, neighbors leaving for the morning.

1	44.0		18	44.9		35	50.4	a	51	42.7		68	42.5		85	43.3	
2	72.2	c/tk	19	44.4		36	44.7	a	52	40.0		69	42.9	c/tk	86	44.7	
3	45.5	c/tk	20	45.2		37	50.4	a	53	39.4		70	71.9	c/tk	87	40.5	
4	42.8		21	48.5	c/tk	38	43.3		54	42.4		71	47.1	c/tk	88	39.3	
5	44.4		22	63.3	c/tk	39	39.9		55	42.5		72	44.4		89	41.7	
6	49.1	d/a	23	53.3	c/tk	40	48.4		56	44.6		73	40.6		90	40.6	
7	53.0	d/a	24	44.1		41	43.8		57	40.9		74	40.1		91	42.1	
8	49.9	d/a	25	45.6		42	39.5		58	42.5		75	44.0		92	42.0	
9	62.1	c/tk	26	43.0		43	39.6		59	42.1		76	40.8		93	40.1	
10	59.9	c/tk	27	43.7		44	48.4		60	44.4		77	41.7		94	43.3	
11	58.0	c/tk	28	48.1		45	39.6		61	45.0		78	41.5		95	40.5	
12	75.0	c/tk	29	48.0		46	42.1		62	43.4		79	42.3		96	40.8	
13	63.3	c/tk	30	44.6		47	41.6		63	39.4		80	45.0		97	43.1	
14	43.7		31	52.2	c/tk	48	42.0		64	44.2		81	43.2		98	44.5	
15	44.0		32	63.5	c/tk	49	42.7		65	40.4		82	41.6		99	41.8	
16	44.1		33	54.0	c/tk	50	42.9		66	39.4		83	43.3		100	42.8	
17	45.5		34	53.7	a				67	41.3		84	42.2		Leq:	58.9	

a: aircraft c: car(s) tk: truck d: dog nc: no cars mc: Motorcycle
 b: birds w: wind lr: leaves rustling ps: pump station working



Maximum Value: 75.0
 Minimum Value: 39.3

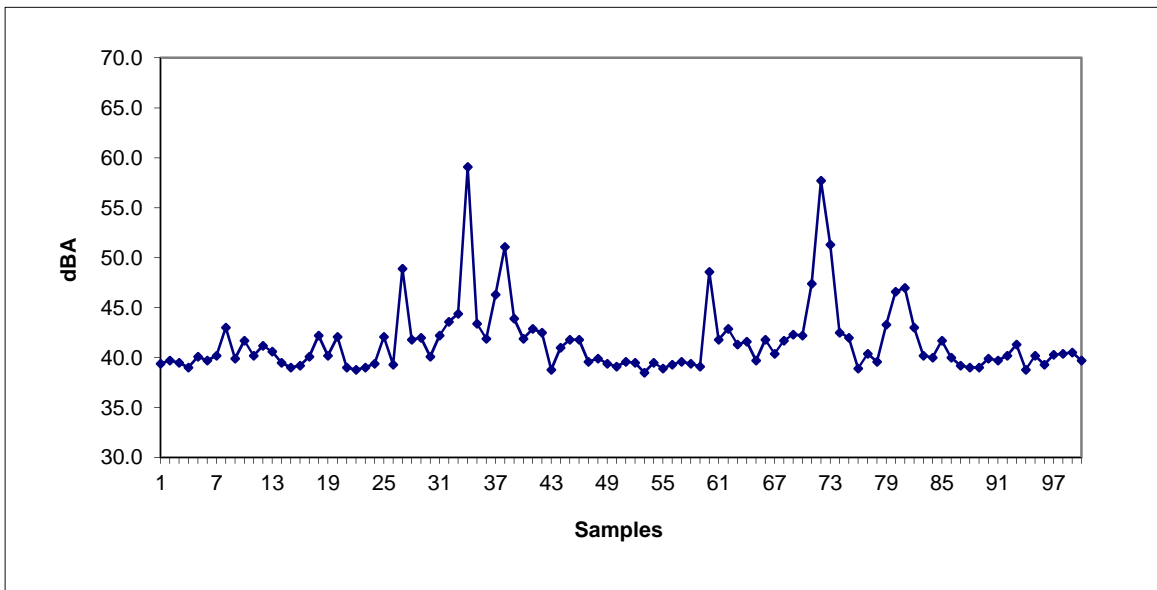
SOUND LEVEL DATA SHEET

STATION 3

Date: 6/24/16
Time: 7:30 AM
Interval: 10 sec
Location: Middle of Spinney Road - woods on both sides of street
Weather: 67 degrees F., with calm breeze from NE
Description: Some bird calls in distance, road noise at a distance.

1	39.4		18	42.2		35	43.4	c/tk	51	39.6		68	41.7		85	41.7	
2	39.7		19	40.2		36	41.9		52	39.5		69	42.3		86	40.0	
3	39.5		20	42.1		37	46.3	c/tk	53	38.5		70	42.2		87	39.2	
4	39.0		21	39.0		38	51.1	c/tk	54	39.5		71	47.4	c/tk	88	39.0	
5	40.1		22	38.8		39	43.9	c/tk	55	38.9		72	57.7	c/tk	89	39.0	
6	39.7		23	39.0		40	41.9		56	39.3		73	51.3	c/tk	90	39.9	
7	40.2		24	39.4		41	42.9		57	39.6		74	42.5		91	39.7	
8	43.0		25	42.1	lr	42	42.5		58	39.4		75	42.0		92	40.2	
9	39.9		26	39.3		43	38.8		59	39.1		76	38.9		93	41.3	
10	41.7		27	48.9	lr	44	41.0		60	48.6	lr	77	40.4		94	38.8	
11	40.2		28	41.8		45	41.8		61	41.8		78	39.6		95	40.2	
12	41.2		29	42.0		46	41.8		62	42.9		79	43.3	a	96	39.3	
13	40.6		30	40.1		47	39.6		63	41.3		80	46.6	a	97	40.3	
14	39.5		31	42.2		48	39.9		64	41.6		81	47.0	a	98	40.4	
15	39.0		32	43.6		49	39.4		65	39.7		82	43.0	a	99	40.5	
16	39.2		33	44.4	c/tk	50	39.1		66	41.8		83	40.2		100	39.7	
17	40.1		34	59.1	c/tk				67	40.4		84	40.0		Leq:	44.9	

a: aircraft c: car(s) tk: truck d: dog nc: no cars mc: Motorcycle
 b: birds w: wind lr: leaves rustling ps: pump station working



Maximum Value: 59.1
 Minimum Value: 38.5

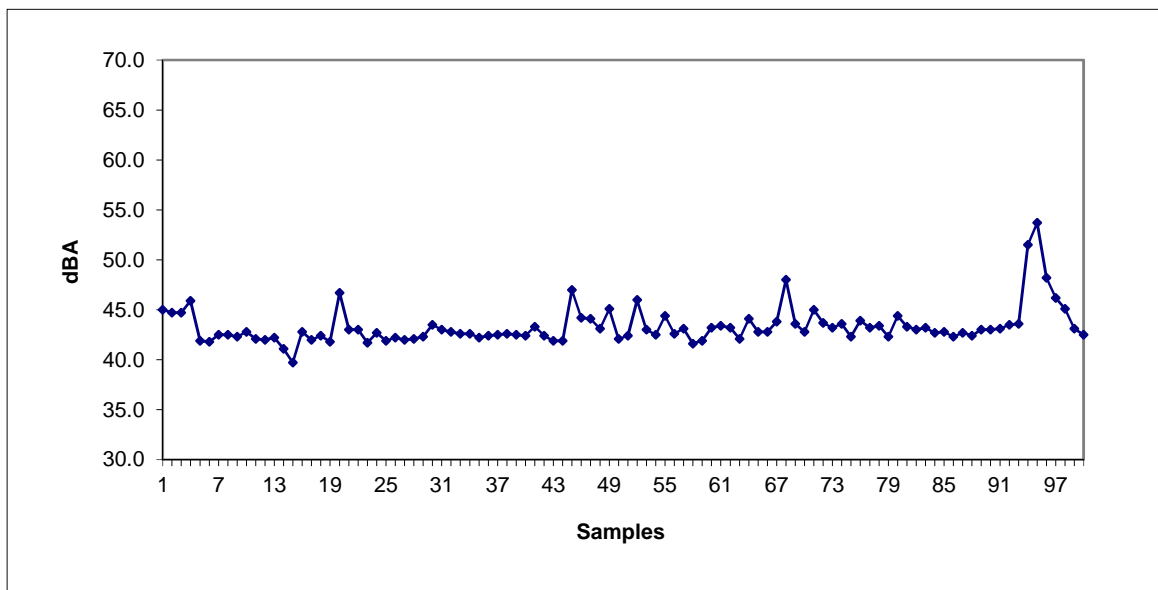
SOUND LEVEL DATA SHEET

STATION 4

Date: 6/24/16
Time: 6:55 AM
Interval: 10 sec
Location: North end of Spinney Road
Weather: 67 degrees F., with calm breeze from NE
Description: Some bird calls in distance, audible hum from water authority building to the west.

1	45.0		18	42.4		35	42.2		51	42.4		68	48.0	lr	85	42.8	
2	44.7		19	41.8		36	42.4		52	46.0	lr	69	43.6		86	42.3	
3	44.7		20	46.7	lr	37	42.5		53	43.0		70	42.8		87	42.7	
4	45.9		21	43.0		38	42.6		54	42.5		71	45.0	lr	88	42.4	
5	41.9		22	43.0		39	42.5		55	44.4		72	43.7		89	43.0	
6	41.8		23	41.7		40	42.4		56	42.6		73	43.2		90	43.0	
7	42.5		24	42.7		41	43.3		57	43.1		74	43.6		91	43.1	
8	42.5		25	41.9		42	42.4		58	41.6		75	42.3		92	43.5	
9	42.3		26	42.2		43	41.9		59	41.9		76	43.9		93	43.6	
10	42.8		27	42.0		44	41.9		60	43.2		77	43.2		94	51.5	a
11	42.1		28	42.1		45	47.0	lr	61	43.4		78	43.4		95	53.7	a
12	42.0		29	42.3		46	44.2	lr	62	43.2		79	42.3		96	48.2	a
13	42.2		30	43.5		47	44.1	lr	63	42.1		80	44.4		97	46.2	lr/a
14	41.1		31	43.0		48	43.1		64	44.1		81	43.3		98	45.1	lr
15	39.7		32	42.8		49	45.1	lr	65	42.8		82	43.0		99	43.1	
16	42.8		33	42.6		50	42.1		66	42.8		83	43.2		100	42.5	
17	42.0		34	42.6					67	43.8		84	42.7		Leq:	44.0	

a: aircraft c: car(s) tk: truck d: dog nc: no cars mc: Motorcycle
 b: birds w: wind lr: leaves rustling ps: pump station working



Maximum Value: 53.7
 Minimum Value: 39.7

Sound Level Attenuation Worksheet
Analysis of Sound Levels at Nearest Residential Property Line

Parameter Source	Source Noise Level (dBA)	Radius 1 (feet)	Radius to apply if R1 < 15' (feet) *	Distance between the source and receptor (feet)	Sound level absent additional attenuation (accounts for attenuation due to inverse square law) (dBA) **	Attenuation for enclosure or solid barrier (dBA)	Attenuation for vegetation (5 dBA per 100' width of dense vegetation) (dBA)	Adjusted Source Level (dBA)	Lowest Ambient Source Level (dBA)	Combined Noise Level (of Adj/10 + Amb/10) (dBA)	Net Increase (dBA)
Pumphouse	76.1	9.0	15.0	300	50.12	15	5	30.12	44.00	44.17	0.2
Closest Fairway (Toro Reelmaster Hybrid 5010 Toro Mower)	67.0	25.0	25.0	130	52.68	0	5	47.68	44.00	49.23	5.2
Closest Rough Area (Toro Groundsmaster 5910 -diesel mower)	82.0	3.0	15.0	100	65.52	0	5	60.52	44.00	60.62	16.6
Additional Rough Area (within 388' of residential property line) Note: this area is the within the extents or where mowing will exceed Town code level for AM hours (Toro diesel mower above)	82.0	3.0	15.0	388	53.74	0	5	48.74	44.00	50.00	6.0
Closest Greens (Toro Greensmaster Eflex Electric mower to be used for greens surrounding hole numbers 8 and 9)	68.0	3.0	15.0	150	48.00	0	5	43.00	44.00	46.54	2.5
Clubhouse (outdoor area)	85.0	20.0	20.0	420	58.56	10	0	48.56	44.00	49.86	5.9

* Radius 1 replacement value. It is noted that the laws of the inverse square law apply at a distance of at least 15' away from the source - therefore 15' must be assumed (otherwise the drop off level assumptions for attenuation with distance will be exaggerated).

** Calculated using the following formula: $SP2 = SP1 - 20 * (\log \text{Radius } 2 / \text{Radius } 1)$ Where SP is sound pressure level, Radius 1 is the distance from the source and Radius 2 is the distance of the receptor or property line in this example (except when the Radius 1 is less than 15, when a distance of 15' must be assumed as noted above).